

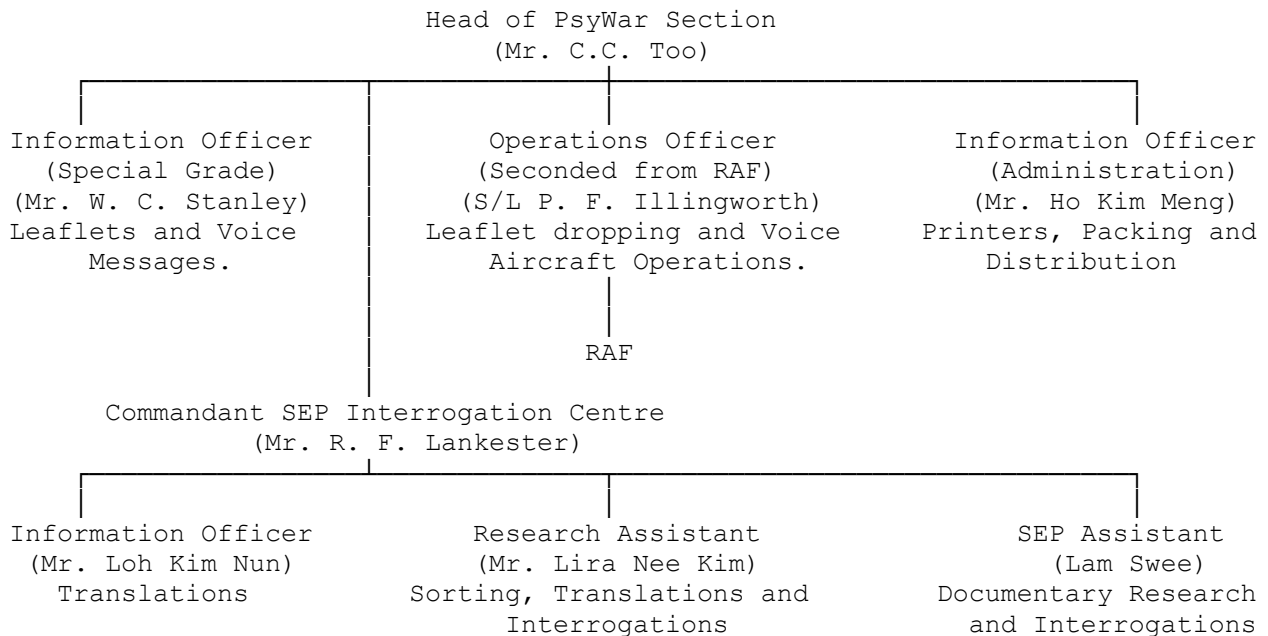
**THE PSYCHOLOGICAL WARFARE SECTION
FEDERATION OF MALAYA**

Command and Administration

1. The PsyWar Section is under the command of the Director of Operations and operates as directed by his Staff of which the Head of the Section is a member. The Section is however a part of the establishment of, and is administered by, the Ministry of Internal Defence and Security, Federation of Malaya.

Organisation

2. In April, 1957 the PsyWar Section was organised as follows:



3. The Editorial Section produces the texts of leaflets and voice aircraft messages in the vernacular languages from drafts submitted from the ground, checks proof copies etc. It comprises:

- 2 Information Officers (Chinese)
- 1 Research Assistant (Chinese)
- 1 Cartoonist (Chinese)
- 5 Chinese SEPs
- 1 Malay SEP attached to the Malay Research Assistant.

Two Research Assistants, a Malay and an Indian, who combine editorial and research functions, are at present on loan to the Information Services. They still assist in editorial and research work in the Malay and the Tamil languages whenever they are not engaged in the field.

Preparation and Distribution of Leaflets

4. The PW Section produces an average of 6,000,000 leaflets each month as part of its normal propaganda campaign. Occasional 'special leaflet operations' are also mounted. Figures for 1956 were:

<i>No. of items produced</i>	<i>LEAFLETS</i>		
	<i>Normal</i>	<i>Special</i>	<i>Total</i>
453	85,524,000	17,800,000	103,324,000

5. Printing is undertaken by the Government Printer or by eight local private printing firms approved by the Government Printer, all in Kuala Lumpur. Three commercial firms undertake blockmaking. The following table summaries printing outputs:

<i>Particulars</i>	<i>PRINTERS</i>	
	<i>Government</i>	<i>Commercial</i>
Average monthly output (1956)	3,090,000	5,537,000
Potential monthly output	10,000,000	20,000,000
Average monthly paper consumption - 1956	40 reels (13" width)	700 reams (31" x 43")
Average size of leaflet	6 3/4" x 9"	7 3/4" x 10 3/4"
Languages in which leaflets are printed	English Malay (Jawi) any language in Roman Type.	English Malay (Jawi) Chinese, Tamil and language in Roman Type.

6. Collection of leaflets from printers and despatch to out-stations and RAF airfields is undertaken on instructions from HPWS by the Distribution Section of the Department of Information Services.

Leaflet Operations

7. Packing and Loading. Bulk leaflets are made into bundles of 2,500 each (varying in weight from 13-16 lbs.) by a small unit of Distribution Section, Information Services, which is permanently stationed at the RAF Station, Kuala Lumpur. Checking and loading onto aircraft is carried out by 55 (Air Despatch) Company, RASC, which also provides despatchers (4 in a Valetta and 5 in a Bristol Freighter aircraft).

8. Aircraft. Leaflets are carried and dropped by three types of Service aircraft. They are:

Type of Aircraft	RAF		Army AOP/LL
	<i>Valetta</i>	<i>Bristol Freighter</i>	
Maximum average freight load (lbs.)	5,000	8,000	350
Average leaflet equivalent	1,000,000	1,600,000	70,000
Radius of action loaded: miles	600	800	
Duration/hours	4½	6½	
Speed/knots	145	145	

9. Special Operations. For 'special operations' (Federation-wide drops) two or three Valetta aircraft have been made available to PW Section and have flown daily with full freight loads of leaflets until operation was completed. The following table indicates some 'special operations':

<i>Operation</i>	<i>Date</i>	<i>No. of leaflets dropped</i>	<i>Length of operation in days</i>	<i>No. of leaflets daily dropped.</i>
CORSICA	Sep '55	28,000,000	12	2,330,000
HEBRIDES	Jan '56	21,000,000	10	2,100,000
TASMANIA	Jan '56	10,000,000	4	2,500,000

Voice Aircraft

10. PW Section is responsible for selecting or approving the contents and targets of voice messages and for ensuring that messages are recorded and made available to the RAF.

11. Recording of messages in all vernacular languages and dialects is undertaken by Radio Malaya who provide announcers and recording staff at their studio in Kuala Lumpur. One Wright and Weaire tape-recording machine is held by Radio Malaya and a spare machine by PW Section. Both machines are maintained by RAF personnel. Messages are recorded on a continuous plastic tape 19 feet long with a playing time of 30 seconds (messages 27 seconds, pause 3 seconds). This is mounted on a special reel developed specifically for the purpose.

12. Aircraft available. Broadcasting of messages to the jungle from the air is carried out by 267 Squadron (Voice Aircraft Flight), RAF, Kuala Lumpur, which consists of:-

(a) 3 Dakota Aircraft

Specially modified Dakota aircraft fitted with Enfield Cub 5.6. KVA diesel generating set installed in the fuselage. This 0.9 power factor, single phase, 50 cycle A/C Mark III generating set produces a 230v. electric current supply to four amplifiers also housed in the aircraft fuselage which in turn deliver a 500 watt output to each of the four loudspeakers. The four speakers, made by Tannoy Limited, are mounted on a jettisonable bar under the belly of the aircraft and are tilted at an angle of 45° to port. A Wright and Weaire magnetic tape-recorder is installed in the fuselage and operated by a qualified airman.

(b) 2 Auster Aircraft

Mark VI Auster used with structural alterations to take a 100 watt Tannoy speaker under each wing, mounted at an angle of 45° to port. An EMI tape-recorder has been mounted in the cockpit. The generator is engine-driven (instead of the conventional air-driven type) and a 24v circuit is used (in place of the normal 12v circuit of standard Auster Mark VI). The tape-recorder is used and operated by the pilot himself.

13. Performance. The following table indicates the performance of Voice Aircraft:-

<i>Detail</i>	<i>Dakota</i>	<i>Auster</i>
Normally fly to right of target area at height of:	2500-3000 ft.	1200-1500 ft.
Audibility range to left of line of flight of:	2500-3000 yds.	1200-1500 yds.

Original document held by the British National Archives, ref: FO 1110/982